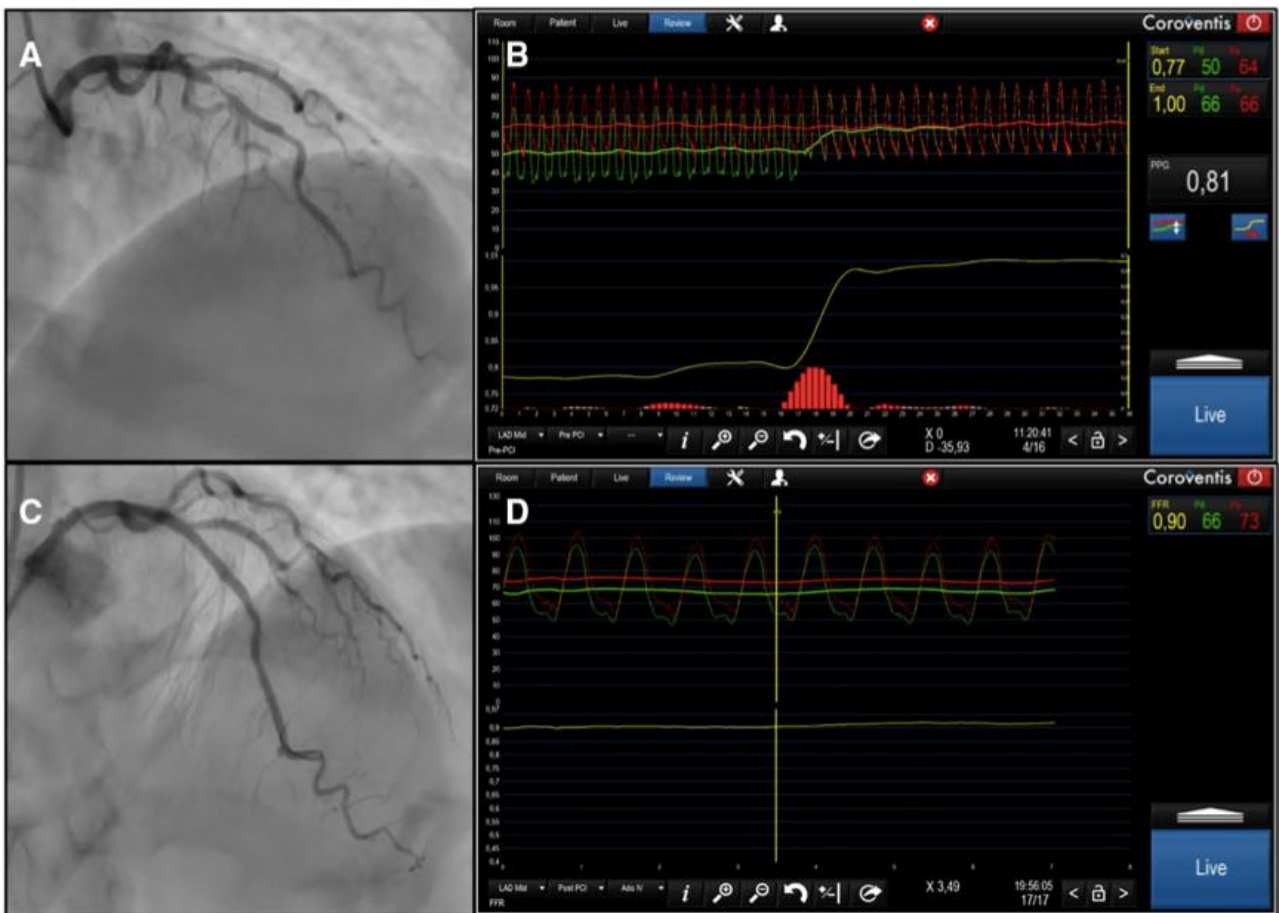
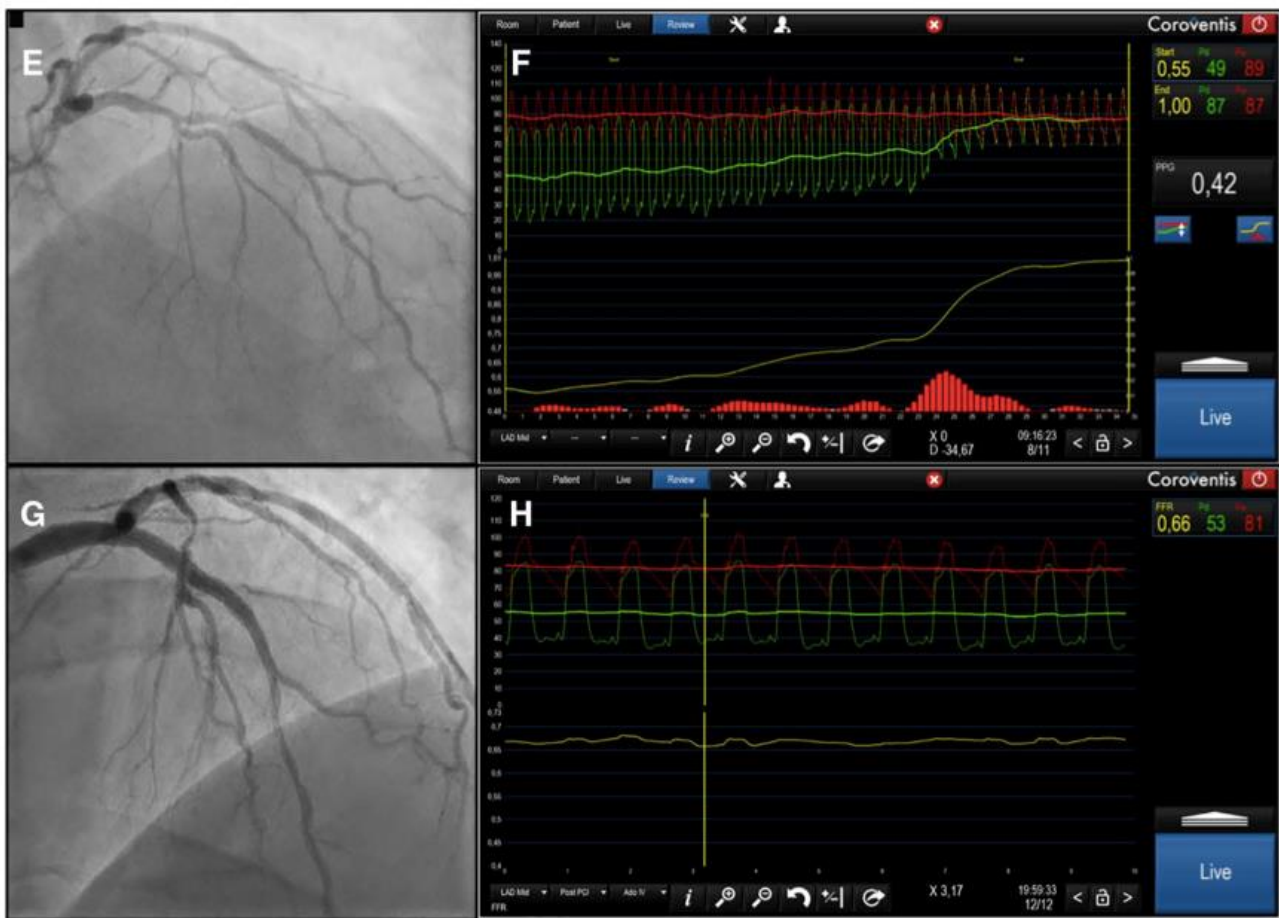


Fig 1. Case examples of focal and diffuse coronary artery disease

Focal coronary artery disease



Diffuse coronary artery disease



A, Angiogram of a left anterior descending artery with a lesion in the mid segment. **B**, Fractional flow reserve (FFR) with a pullback before percutaneous coronary intervention (PCI). This case had an FFR of 0.77 with a pullback pressure gradient of 0.81. **C**, Angiogram after PCI. **D**, Post-PCI FFR of 0.90. **E**, Angiogram of a left anterior descending artery with a lesion in the mid segment. **F**, FFR of 0.55 with a pullback pressure gradient of 0.42, pointing at diffuse coronary artery disease. **G**, Post-PCI angiogram. **H**, Post-PCI FFR of 0.66.

Fig 2. Study design and main results of Continuous vs Bolus Thermodilution to Assess Microvascular Resistance Reserve Study

